

New Standard of Premium Digital Doorlock

Digital Door Lock User Manual

It's hoped that you use the products after reading carefully the manual.

It's possible to change some parts of function without prior notice to users in order to improve the products's performance.

Premium Smart Digital Doorlock

New Concept Digital Doorlock

A convenient digital door lock



Door-opening function with the use of password, card

You can use your password and card key conveniently and freely make settings and changes.



Fire safety function

It operates at a certain heat(around 65 degree Celsius) in case of fire, which may somewhat vary by installation environment.



External double locking device

While you are out for long hours, operation of the indoor buttons can be stopped, through which theft through the milk drop is prevented.



Connection to home network system(optional)

Door-opening is possible indoors through a connection to the remote controller or wireless transmitter.



Alarm function in case of housebreaking & theft

If a wrong password is entered 3 or more times, all the operation is stopped for 30 seconds, and forced door-opening results in an alarm sounding.

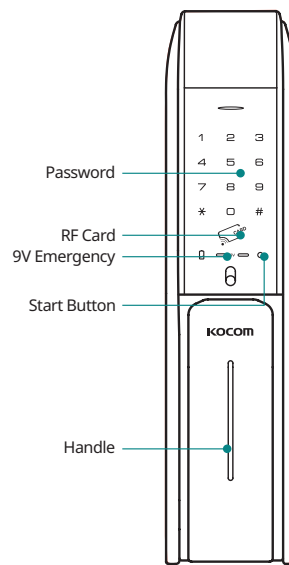


Self-diagnosis function

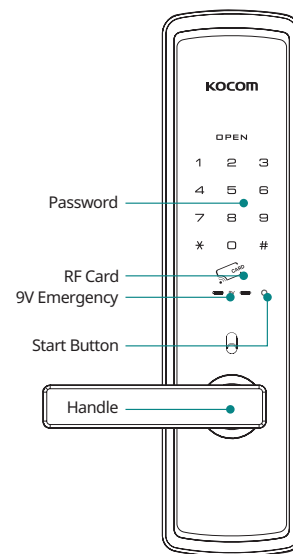
The door lock itself diagnoses defect, and informs you of malfunction or the battery change time through the alarm.

**Be sure to make door open manually
in emergency case**

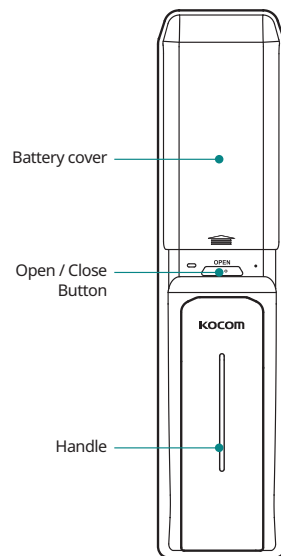
**This product can be damaged
when the door lock gets broken**



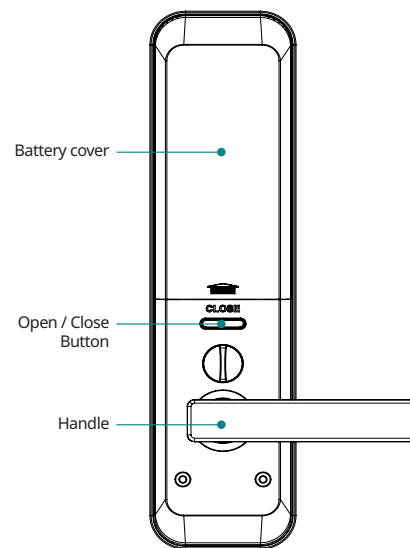
Main Key(OUT)



Main Key(OUT)



Main Key(IN)



Main Key(IN)

Contents

General Information · 3

Precautions · 4

How to use · 5

Quick Manual · 11

Product Features · 12

Warranty Service for Product Defects · 13

Warranty Card(for Company) · 14

Precautions

Please read the precautions thoroughly for your safety!



DANGEROUS

You should not dismantle randomly the product

- The digital product is assembled minutely and complicatedly in the inside.
- The random dismantlement may be dangerous besides making the troubles of the product.
- Consumer's responsibility in case of random dismantlement



CAUTIONS

Prohibition of water cleaning

- It's prohibited to clean with water because water cleaning may disturb an electronic circuit.
- It's hoped that a dry towel is used for cleaning the product.



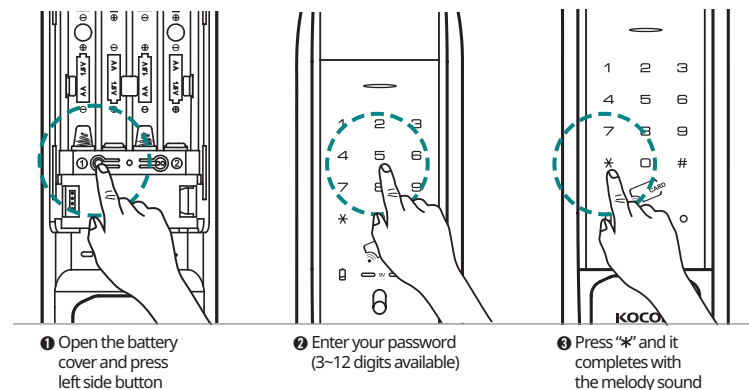
WARNING

The response measures to electric discharge of battery are as follows

- The usage period of battery is at most four months to eight months. (Based on the use of ten times a day)
Exchange the battery at that time.
- Use 4-8 alkaline batteries of 1.5v AA. (Rechargeable batteries unusable)
- In case of full discharge, it's possible to open the door with touch-key and password with linking 9V alkaline battery to outdoor body terminal.

How to use

1. Password registration



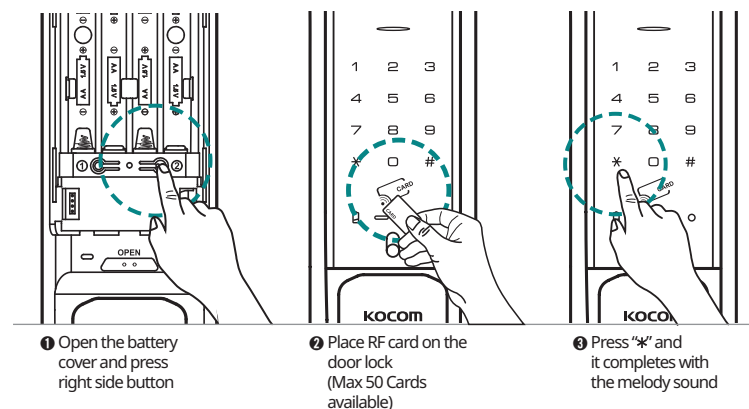
After password registration, make sure it works



WARNING

1. When you register passwords for the first time or change them, the door may be locked by mistake. Make sure to open the front door and carry an emergency key, card, with you.
2. For the passwords, specify the 3~12 digit number except for "*" and "#"
3. If you enter new passwords, the existing ones will be deleted.
4. When all products are delivered, their passwords are set into 1, 2, 3, 4, 5, 6, 7, 8, 9, 0 and 1, 2, 3, 4.
5. When you install a product for first time, make sure the user enters the passwords himself/herself.

2. Card registration

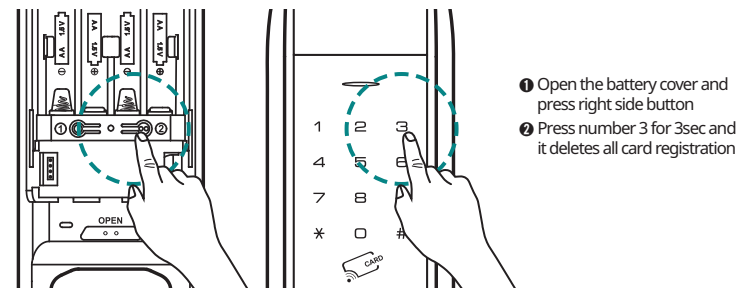


WARNING

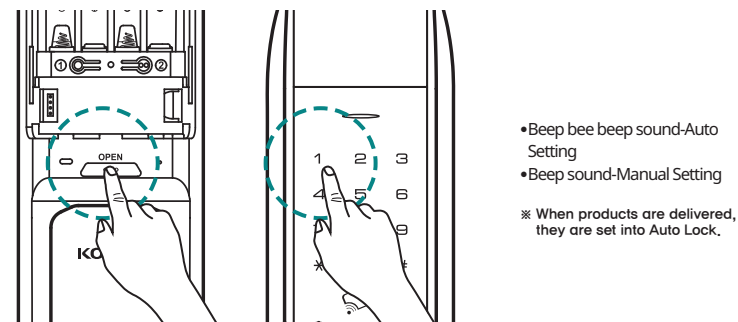
For your safety, we recommend you to use all RF-card and Tag that manufacturer provide with. KOCOM confirms that "ISO 14443 Type A"-certified RF-card and Tag to be used with the Digital door locks. We, KOCOM, are not responsible with the cases that customers use other type RF-card and Tag, credit card, Smart card and Mobile phone.

How to use

3. Card key deletion



4. Auto-Close / Manual-Close setting



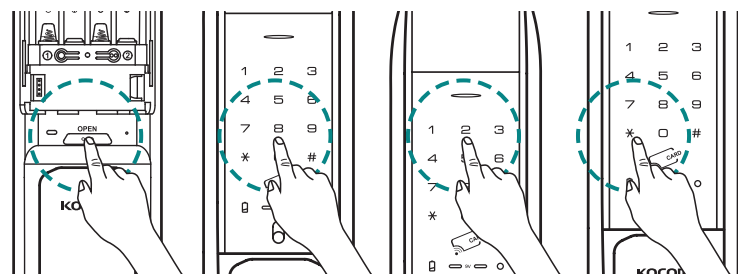
Auto-Close setting

Press "OPEN / CLOSE" button for 5sec and press number 1. You will hear long beep sound as confirmation

Manual-Close setting

Press "OPEN / CLOSE" button for 5sec and press number 1. You will hear short beep sound as confirmation

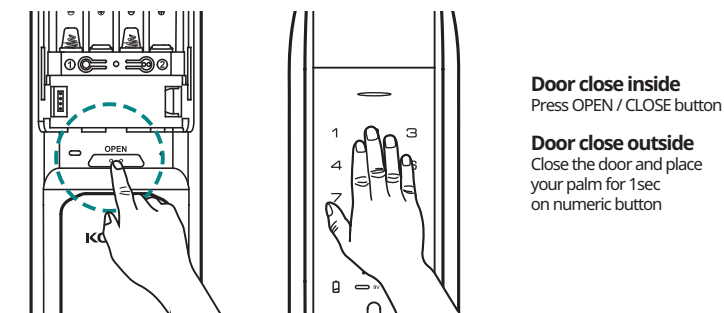
5. Auto-Close / Time setting



Auto-close setting

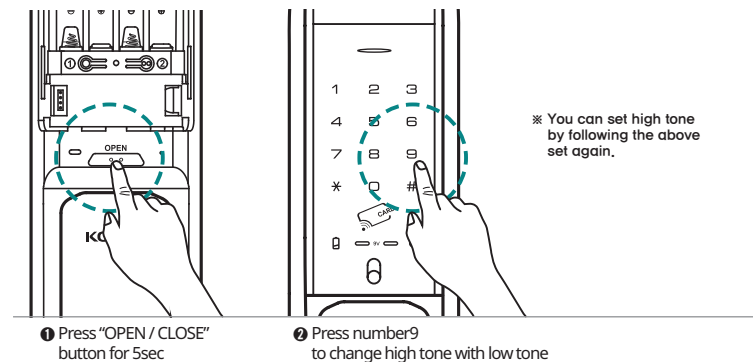
Press "OPEN / CLOSE" button for 5sec and then you will hear beep sound.
Press number 8 and press number (1~8) for time set and press "*" to complete. Factory default is 2sec.

6. How to close manually

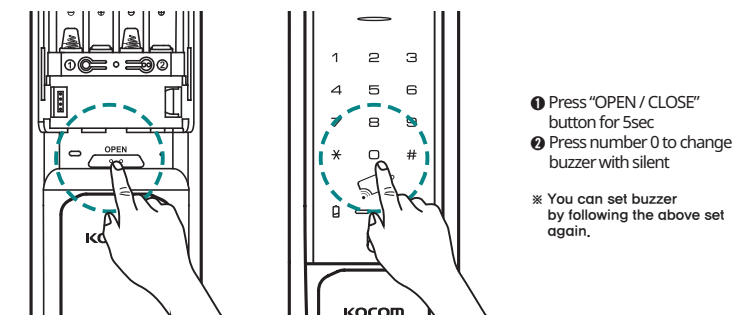


With releasing Auto-door close function, door does not close automatically and follow up as above

7. High / Low tone setting

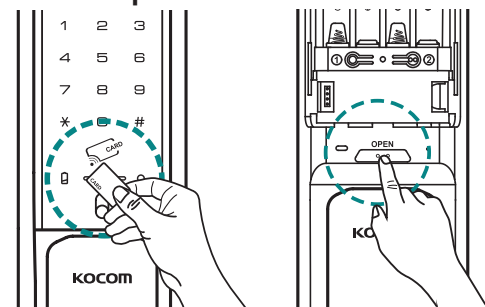


8. Buzzer / silent setting



How to use

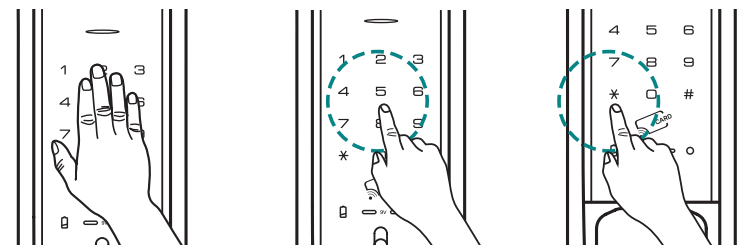
9. How to open the door



Door open in house
Press "OPEN / CLOSE" button
or pull or push the handle
to open the door

Door open with RF card

Place RF card on door lock front and lock is opened with melody



Opening door with password from outside

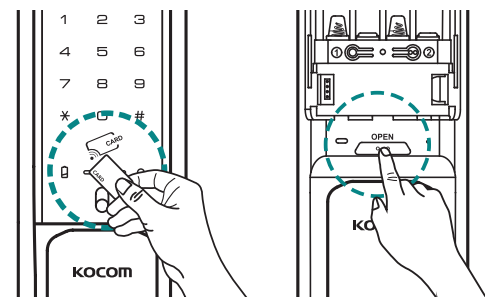
Place hand on keypad or press Start button to lighten keypad.
Press registered password and press "*" or "#" to open door.

Manner Mode

Pressing Start button will activate manner mode, and door will open with no configuration alarm.
(Auto-setting to non-manner mode after door opening)

In case of wrong password 3 times, you will hear warning sound for 30sec and number pad gets stuck

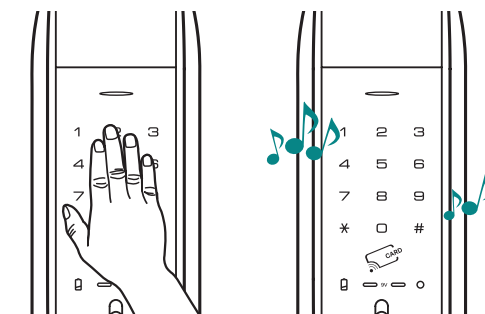
10. Imaginary function



- ① Press "OPEN/ CLOSE" button for 5sec
- ② Press number 2

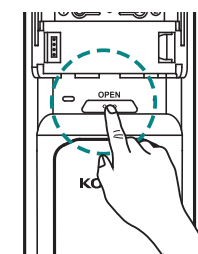
- With long beep sound : Activated
- With short beep sound : Deactivated

11. How to close in force



Force lock from outside
Press "Start" button and "#" for 5sec to complete for lock.
You will hear beep sound as confirmation.
This is double lock when you leave home for a long time and inside buttons are not working.

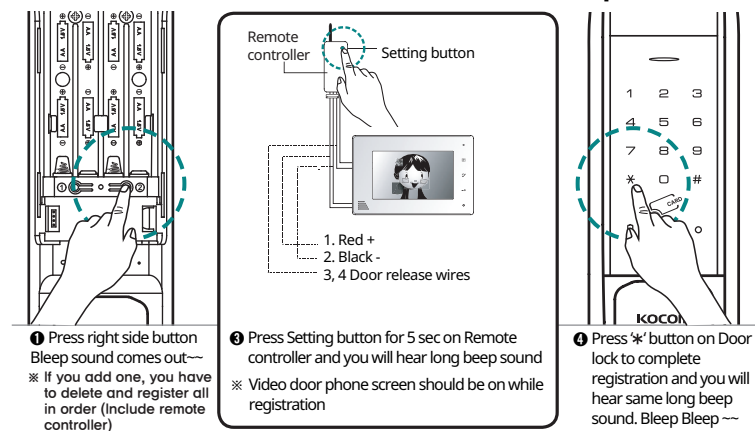
- ▶ When "Force lock from outside" activated, "OPEN / CLOSE" button is not working
- ▶ When "Force lock from outside" activated, it gets deactivated if you pull or push the handle from inside
- ▶ When "Force lock from outside" activated, you can open the lock with password or card



Force lock from inside

Press "OPEN / CLOSE" button for 5sec and it completes with melody sound.
This is double lock and outside buttons are not working.
It gets deactivated when you open the lock from inside.

12. Way to register wireless transmission / reception communication device module for door lock (Optional)



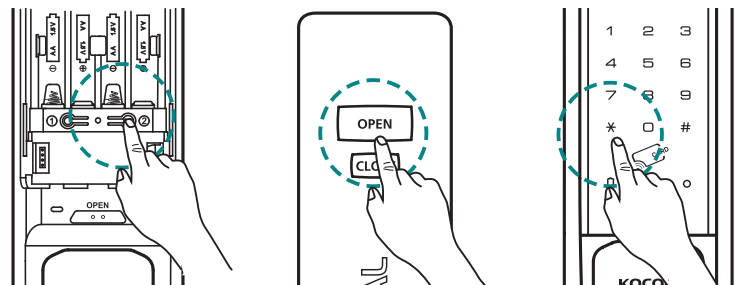
- ① Press right side button
Bleep sound comes out ~
※ If you add one, you have to delete and register all in order (Include remote controller)

- ② Press Setting button for 5 sec on Remote controller and you will hear long beep sound
※ Video door phone screen should be on while registration

- ③ Press "*" button on Door lock to complete registration and you will hear same long beep sound. Bleep Bleep ~

How to use

13. Remote control registration (option)



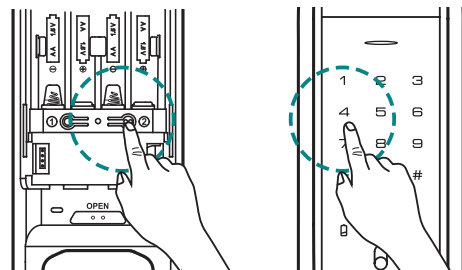
① Press right side button while opening the door

※ Max 3 remote controllers connectable
※ If you add one, you have to delete and register all in order

② Press both "OPEN" and "CLOSE" button at the same time

③ Press "*" button on the door lock and you will hear beep sound as confirmation

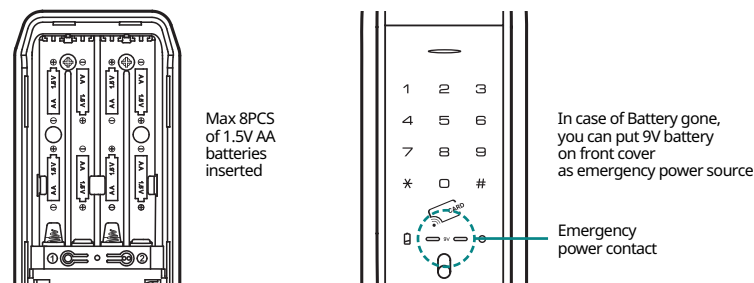
14. Remote control deletion



① Press right side button while opening the door

② Enter number 4 for 3sec to delete remote controller function

15. Battery replacement method



1. **Battery life time** : 4M to 8M upon 10times using a day

2. **Battery change alarm** : Blinking red lights with melody.

Open battery cover and replace all 4PCS of 1.5V AA at once. Make sure its polarity

3. **Emergency power supply** : After battery is fully discharged, place 9V battery on emergency power contact and open the door with password or RF card

Quick Manual

1. To change into Auto / Manual

Press the OPEN / CLOSE button for 5 seconds or longer + the number "1"

2. To change random security coding (Option)

Press the OPEN / CLOSE button for 5 seconds or longer + the number "2"

3. To register passwords for 5 users (Option)

Press the OPEN / CLOSE button for 5 seconds or longer + the number "3"

4. To delete remote control adaptor registration

Press the OPEN / CLOSE button for 5 seconds or longer + the number "4"

5. To change into Card Auto / Manual (Option)

Press the OPEN / CLOSE button for 5 seconds or longer + the number "5"

6. To operate an OPEN / CLOSE button (Option)

Press the OPEN / CLOSE button for 5 seconds or longer + the number "6"

7. To setup double check

Press the OPEN / CLOSE button for 5 seconds or longer + the number "7"

8. To set the time for Auto Lock

Press the OPEN / CLOSE button for 5 seconds or longer + the number "8" + the number "3"(changed into 3 seconds)

9. To change a sound into Treble (low) / Bass (high)

Press the OPEN / CLOSE button for 5 seconds or longer + the number "9"

10. To change a sound into Buzzer / Silence

Press the OPEN / CLOSE button for 5 seconds or longer + the number "0"

11. Card deletion function

If you press the card registration button and the button "3" for 3sec the card will be deleted

12. Mischief Prevention Function

Not allowed to access the system in the event of mischief 3 times or more

13. Battery Replacement Indication

In the event of lack of batteries (less than 4.3V), Korean children song ("School Bell") melody comes out

14. Fire Detection Sensor

If the system detects the temperature $65^{\circ}\text{C} \pm 10^{\circ}\text{C}$ degrees Celsius in the event of a fire, the door will open automatically

Product Features



Number and card key (optional) you can use

You can use your password and card key conveniently and freely make settings and changes



The open / Close functions of card and one-touch

All motions became convenient through simple one-touch



The function of automatic re-Locking

The automatic locking in case of closing a door



Self-diagnostic function

The door lock diagnoses the troubles of the system by itself, making you know the troubles of the function and the time to exchange batteries through alarm sound



It's available for 5 persons to use the password

Five persons can use ID differently each other



Automatic locking and time setting available

Free time setting available



The function of outward double-Locking device

In case of long-time outing, the motion of inside button is set to stop so that the robbery through milk slot can be prevented



Remote controller, home network registration available (Optional)

Available opening doors with remote controller in door



No. of cards you can register

You can register up to 50 cards



Manner function

Through the control of button and melody occurring from the product's motion, it's possible to prevent the neighbors from the noise at midnight



Function of fire sensor

In case of fire, a status of $65^{\circ}\text{C} \pm 10^{\circ}\text{C}$ makes the door opened automatically So, you can escape safety



Imaginary number function

The function of making other's passwords unknown



Button lighting device distinguishable in darkness

When the device is worked, the lamp is lighted, so it's available to use even in darkness

Warranty Service for Product Defects

Damage types		Compensation items	
		Within warranty period	After warranty period
State of Normal Use	In case the troubles occur within 12 months after installation	Repair for free	Repair for Cost
	In case the same troubles occur two times	Repair for free	Repair for Cost
	In case the same troubles occur three times	Product replacement	Repair for Cost
	In case there is no any parts for repair	Product replacement	Product replacement (Limited to flat-rate depreciation)
Intention or Fault of Consumer	In case of an official trip because of consumer's mistake including the fault of exchanging batteries and the immaturity of inputting	Repair for Cost	Repair for Cost
	To exchange consumption goods including batteries	Repair for Cost	Repair for Cost
	Failures or damages due to other purposes than the original purpose of the product	Repair for Cost	Repair for Cost
	Failures or damages of purpose	Repair for Cost	Repair for Cost
	Failures or damages because entering passwords has been omitted or passwords have been forgotten	Repair for Cost	Repair for Cost
	Product damaged because of not carrying an emergency manual key	Repair for Cost	Repair for Cost
Failures or damages due to a fire or natural disasters		Repair for Cost	Repair for Cost
Malfunctions due to condensation and moisture and improper operations due to poor installation		Repair for Cost	Repair for Cost

Warranty Card(for Company)

Thank you very much for purchasing
KOCOM's digital door lock.

The quality assurance period is counted from the date of purchase.
Therefore be sure to have the date specified for sufficient service.

Consumer Name	
Telephone	
Model Name	
Serial Number	
Term of Guarantee	
Address	
Installation Agency	
Telephone	
Address	

- This product is produced by the thorough quality management.
- In case any troubles occur in the state of normal use within the warranty period, you can receive A/S for free.
- You are required to fill up the address, name and telephone number on the warranty card in time of buying the product and to keep the card well, and if otherwise, you need to pay for repair.

※ Welcome your feedback

New Standard of Premium Digital Doorlock

Digital Door Lock User Manual

KOCOM

- Distributor: KOCOM Co., Ltd.
- Manufacturer: Hione Plus Co., Ltd.
- Address: Arayuk-ro 22, Gochon-eup, Gimpo-si, Gyeonggi-do, Korea (Jeonho-ri 721, Gochon-eup)
- Models: KDL-7100SK, KDL-3600SK, KDL-3650SK, KDL-2600K, KDL-3700SK, KDL-3750S, KDL-2700K
- Manufacture country: Made in Korea
- Website: www.kocom.co.kr



KDL-7100SK

Opening method : 3-Way
Password + Card + Key



KDL-3600Series

Opening method : 3-Way
Password + Card + Key



KDL-2600K

Opening method : 3-Way
Password + Card + Key



KDL-3700Series

Opening method : 3-Way
Password + Card + Key



KDL-3750S

Opening method : 2-Way
Password + Card



KDL-2700K

Opening method : 3-Way
Password + Card + Key

- You are kindly recommended to install the anticrime devices for the better and stronger security
- It's prohibited to dismantle, assemble and process the door lock with other purposes than installation and construction without a prior written approval from this Company
- It's possible to change the products and their manuals without prior notice in order to upgrade their performance

Made in KOREA



CAUTIONS

- To receive our full warranty services, please make an entry of all the items in a quality assurance
- If you do not make the entry, you must pay even during our warranty period
- In the event of malfunctions due to condensation and moisture, you must pay for warranty services
- ※For problems due to condensation or with installation, you must pay for the services
- ※In the event you have forgotten passwords, or have lost a card / a manual key, you must pay for the services
- Company : KOCOM. Co., LTD.