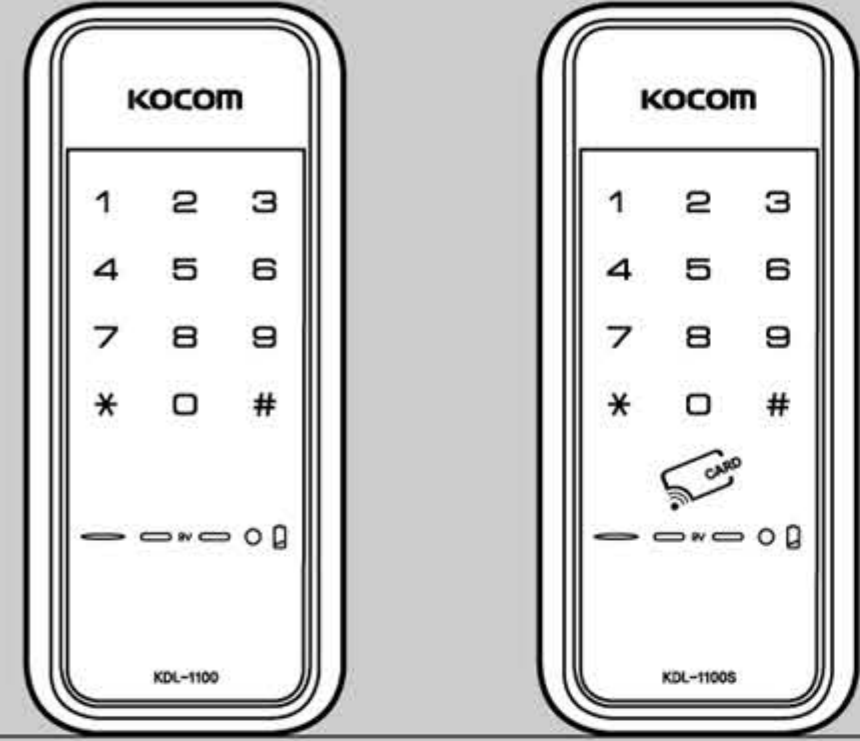


- Distributor : KOCOM Co., Ltd.
- Manufacturer : Hione Plus Co.,Ltd
- Models : KDL-1100S, 1100 Series
- Address : 22, Arayuk-ro, Gochon-eup, Gimpo-si, Gyeonggi-do, Korea (210-3, Jeonggi-ri, Gochon-eup)
- Manufacture country : Made in Korea
- Website : www.kocom.co.kr

New Standard of Premium Digital Doorlock

Auxiliary Lock User MANUAL

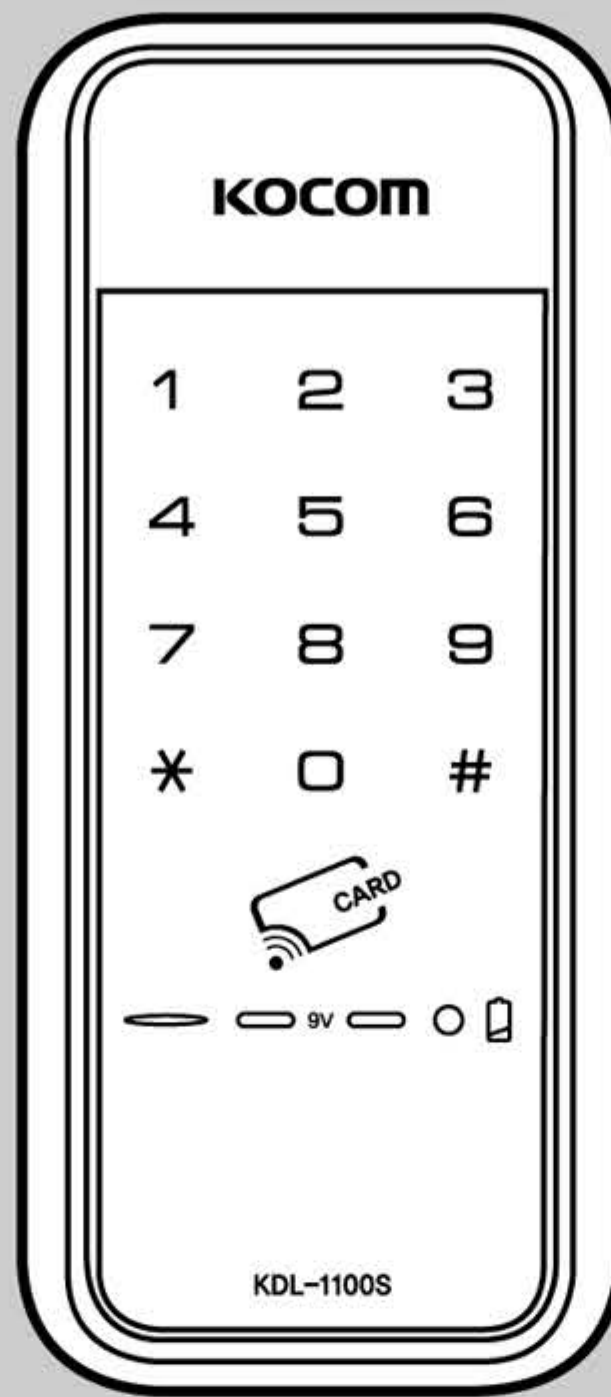
- It's hoped that you use the products after reading carefully the manual.
- It's possible to change some parts of function without prior notice to users in order to improve the products's performance.



KDL-1100
Opening method : 1-Way
Password

KDL-1100S
Opening method : 2-Way
Password + Card

Made in KOREA

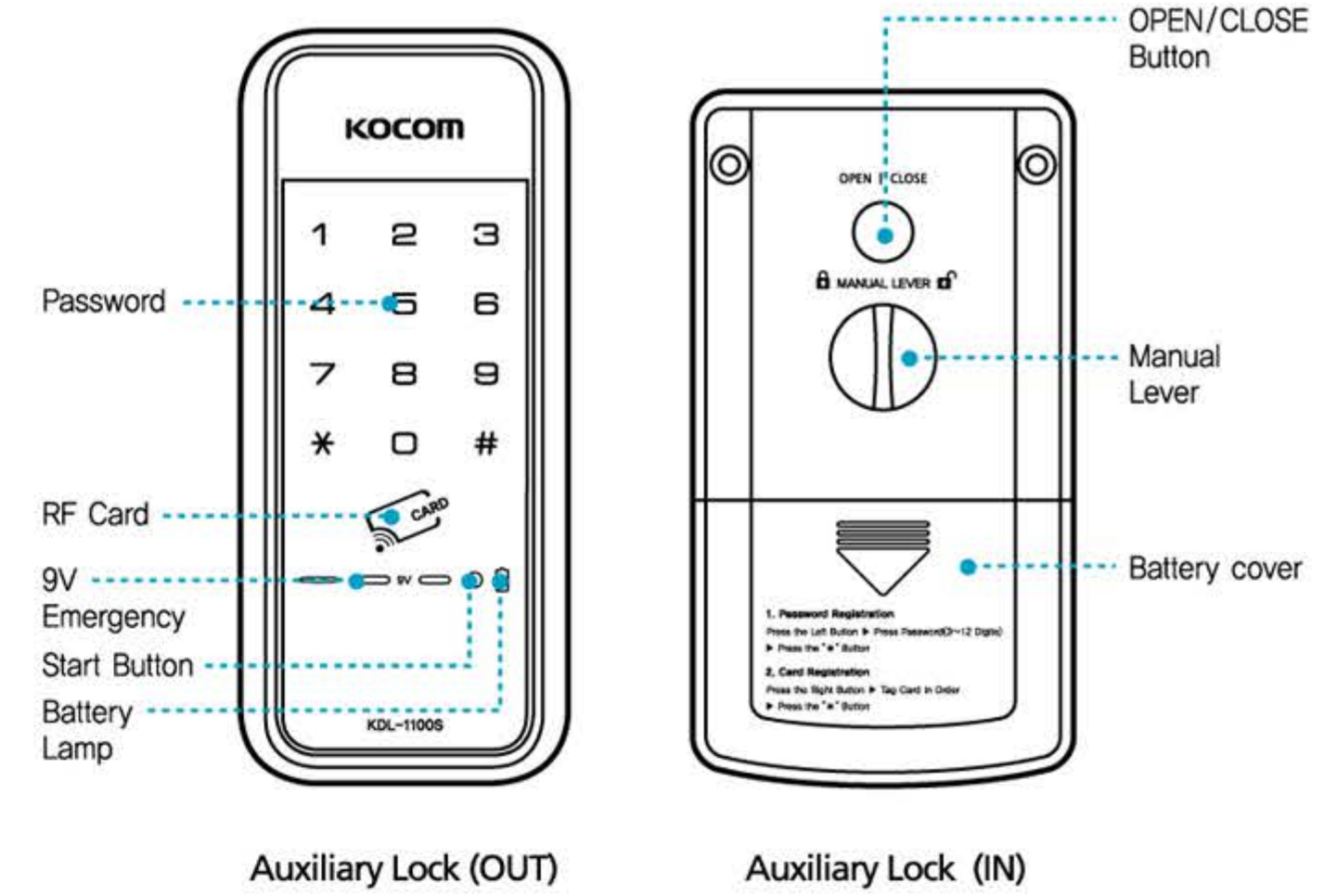


Easy! Smart Digital Door Lock by Kocom

- Door-opening function with the use of password, card**
You can use your password and card key conveniently and freely make settings and changes.
- Fire safety function**
It operates at a certain heat (around 65 degree Celsius) in case of fire, which may somewhat vary by installation environment.
- External double locking device**
While you are out for long hours, operation of the indoor buttons can be stopped, through which theft through the milk drop is prevented.
- Connection to home network system (Optional)**
Door-opening is possible indoors through a connection to the remote controller or wireless transmitter.
- Alarm function in case of house breaking and theft**
If a wrong password is entered 3 or more times, all the operation is stopped for 30 seconds, and forced door-opening results in an alarm sounding.
- Self-diagnosis function**
The door lock itself diagnoses defect, and informs you of malfunction or the battery change time through the alarm.

Be sure to make door open manually in emergency case
This product can be damaged when the door lock gets broken

1. General Information



2. Precautions

Please read the precautions thoroughly for your safety!



- You should not dismantle randomly the product**
- The digital product is assembled minutely and complicatedly in the inside.
 - The random dismantlement may be dangerous besides making the troubles of the product.
 - Consumer's responsibility in case of random dismantlement



- Prohibition of water cleaning**
- It's prohibited to clean with water because water cleaning may disturb an electronic circuit.
 - It's hoped that a dry towel is used for cleaning the product.



- The response measures to electric discharge of battery are as follows**
- The usage period of battery is at most four months to eight months. (Based on the use of ten times a day)
Exchange the battery at that time.
 - Use 4 alkaline batteries of 1.5v AA. (Rechargeable batteries unusable)
 - In case of full discharge, it's possible to open the door with touch-key and password with linking 9V alkaline battery to outdoor body terminal.



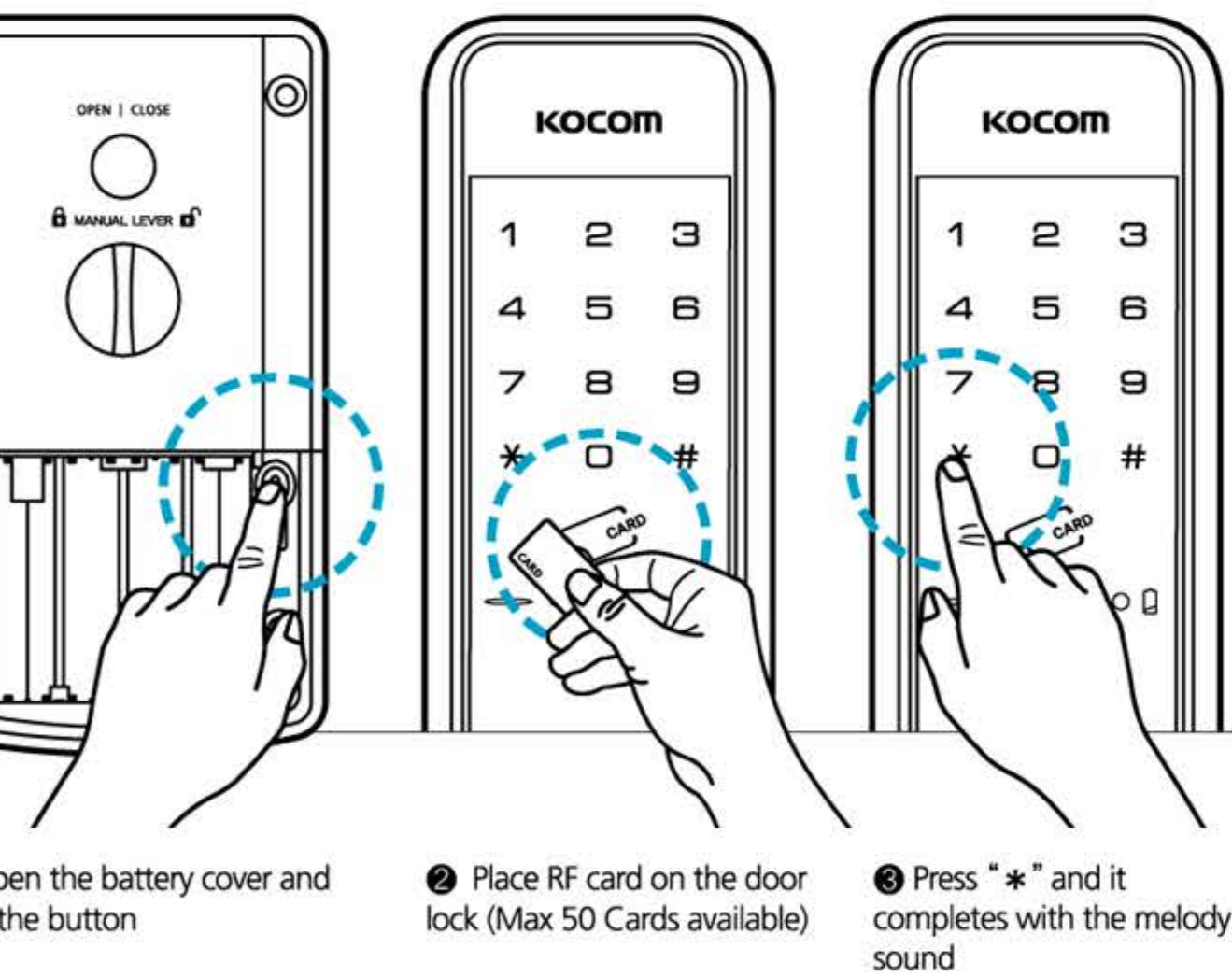
- ♣ To receive our full warranty services, please make an entry of all the items in a quality assurance.
- ♣ If you do not make the entry, you must pay even during our warranty period.
- ♣ In the event of malfunctions due to condensation and moisture, you must pay for warranty services.

- For problems due to condensation or with installation, you must pay for the services.
- In the event you have forgotten passwords, or have lost a card/a manual key, you must pay for the services.

• Distributor : KOCOM Co.,Ltd.

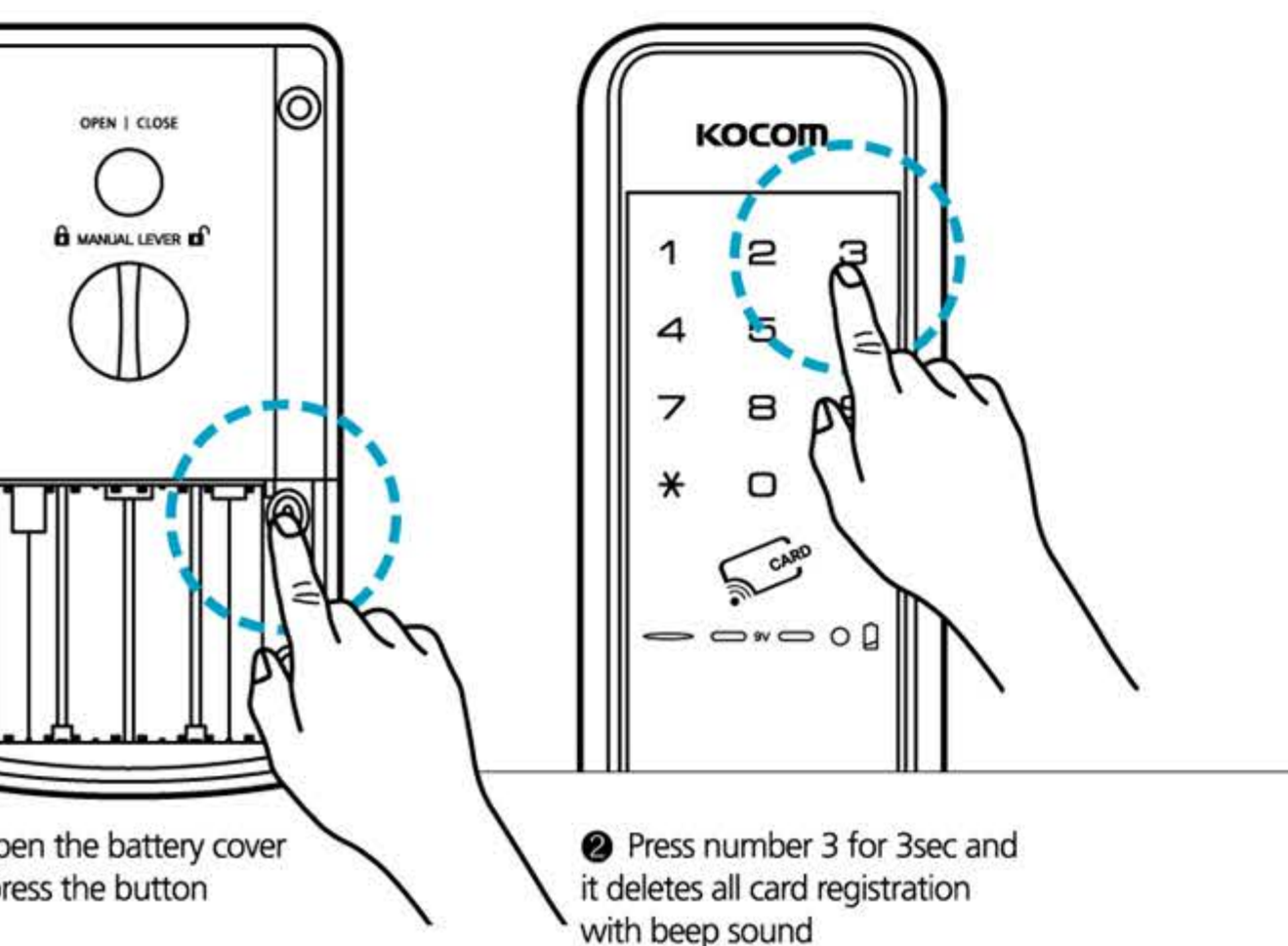
3. How to use

1. Card registration



- ※ Certainly check whether the card key was properly registered.
- ※ When re-register, the card key registered in past is added.
- ※ Registration is possible only with the door open.

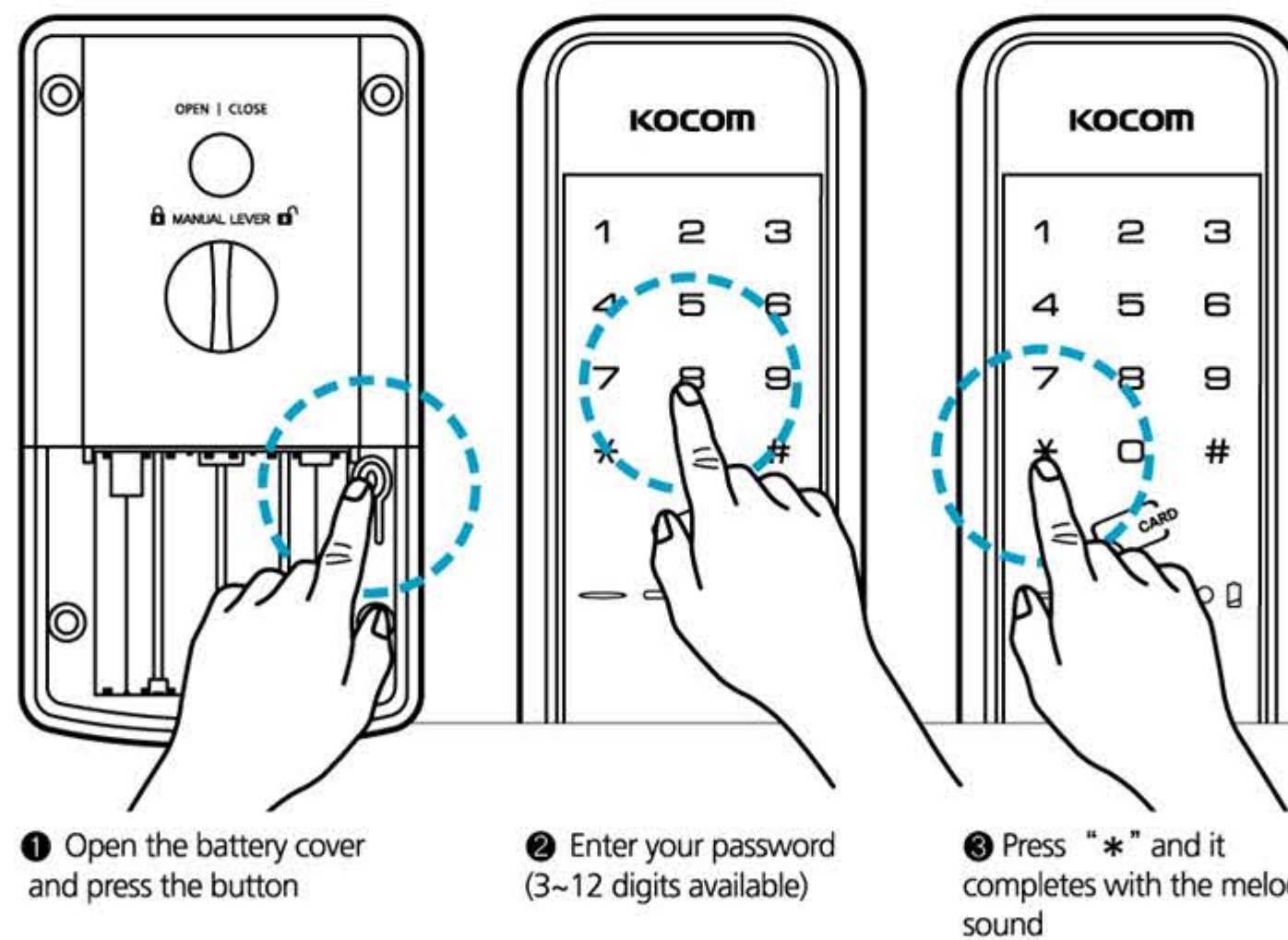
2. Card key deletion



For your safety, we recommend you to use all RF-card and Tag that manufacturer provide with. KOCOM confirms that "ISO 14443 Type A" certified RF-card and Tag to be used with the Digital door locks. We, KOCOM, are not responsible with the cases that customers use other type RF-card and Tag, credit card, Smart card and Mobile phone.



3. Password registration

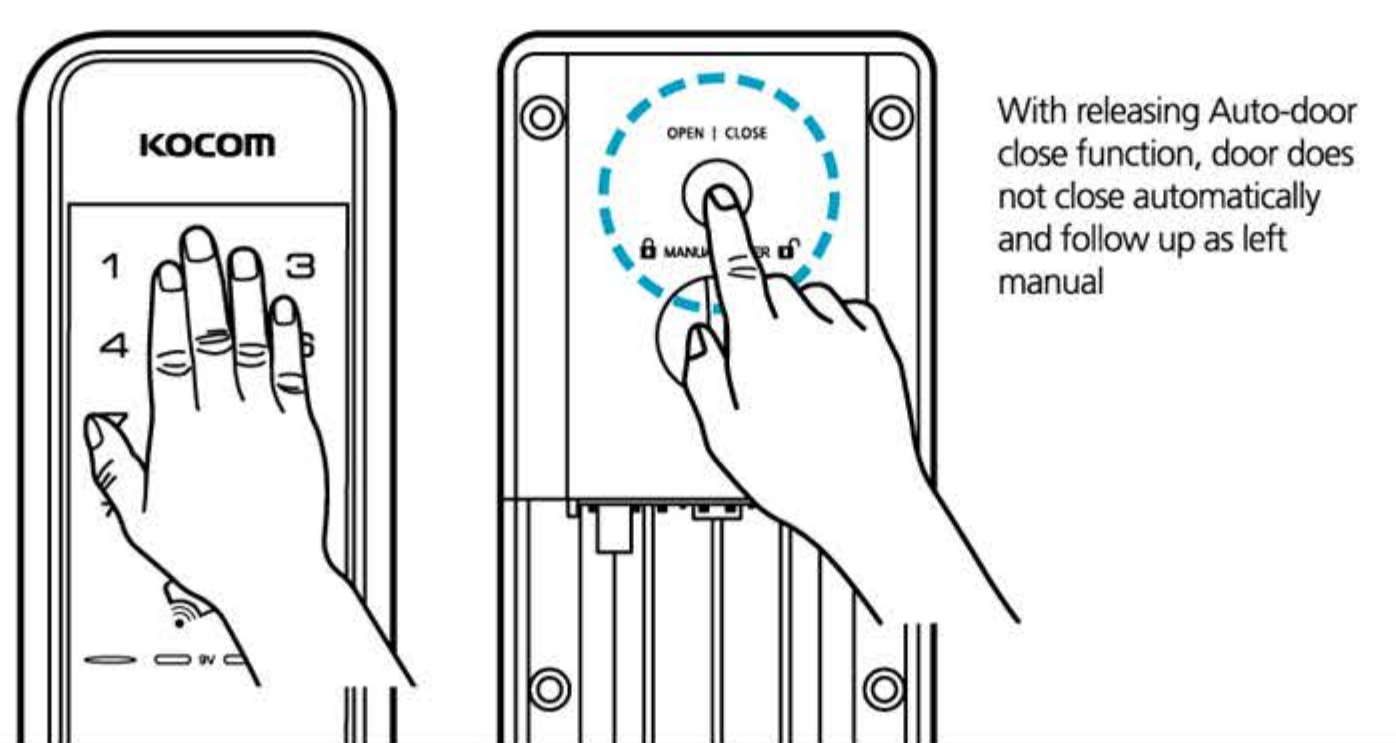


After password registration, make sure it works



1. When you register passwords for the first time or change them, the door may be locked by mistake. Make sure to open the front door and carry an card, with you.
2. For the passwords, specify the 3 - 12 digit numbers, except for "*" and "#"
3. If you enter new passwords, the existing ones will be deleted.
4. When all products are delivered, their passwords are set into 1,2,3,4,5,6,7,8,9,0
5. When you install a product for first time, make sure the user enters the passwords himself /herself.

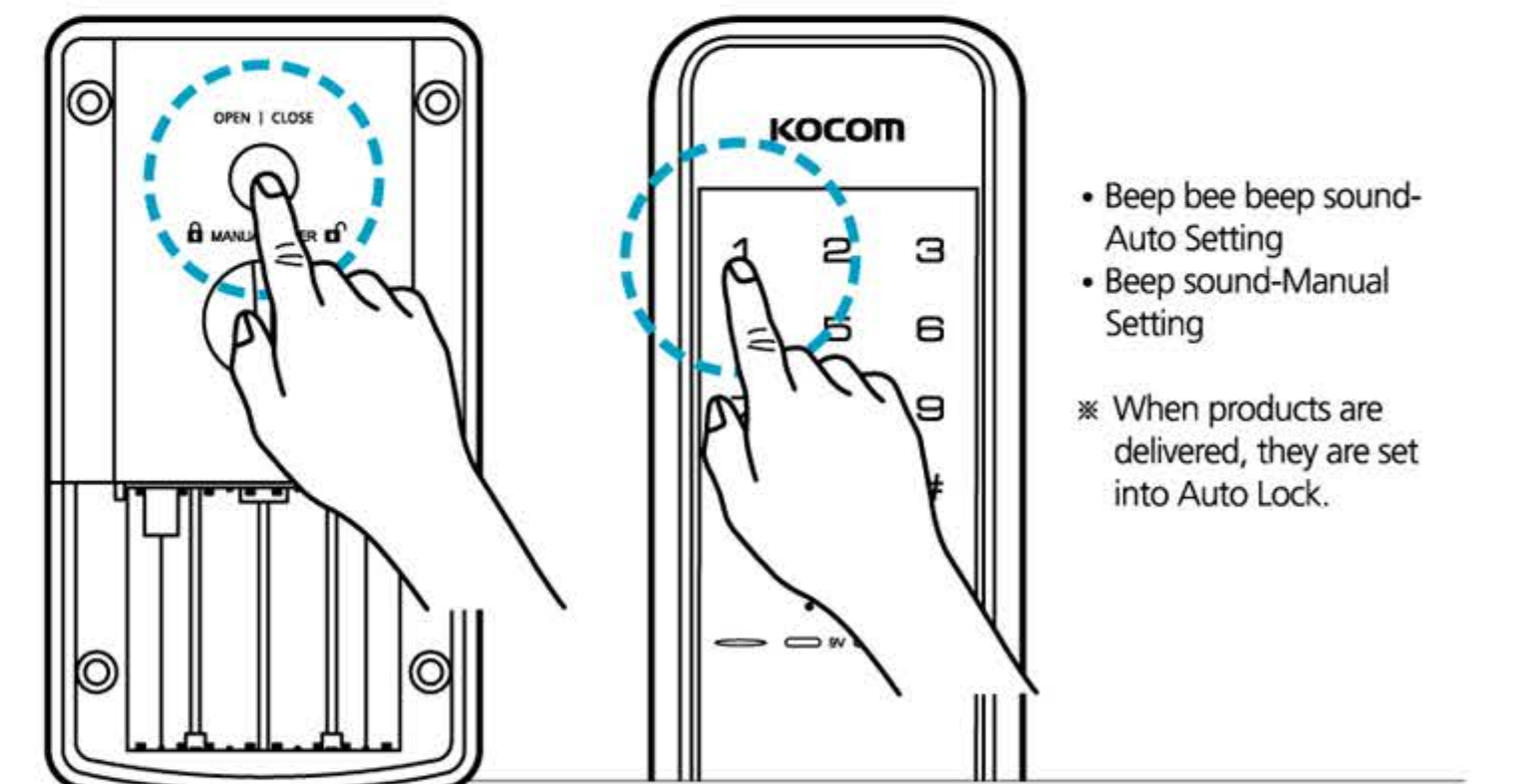
4. How to close manually



Door close outside
Close the door and place your palm on numeric button

Door close inside
Press OPEN/CLOSE button

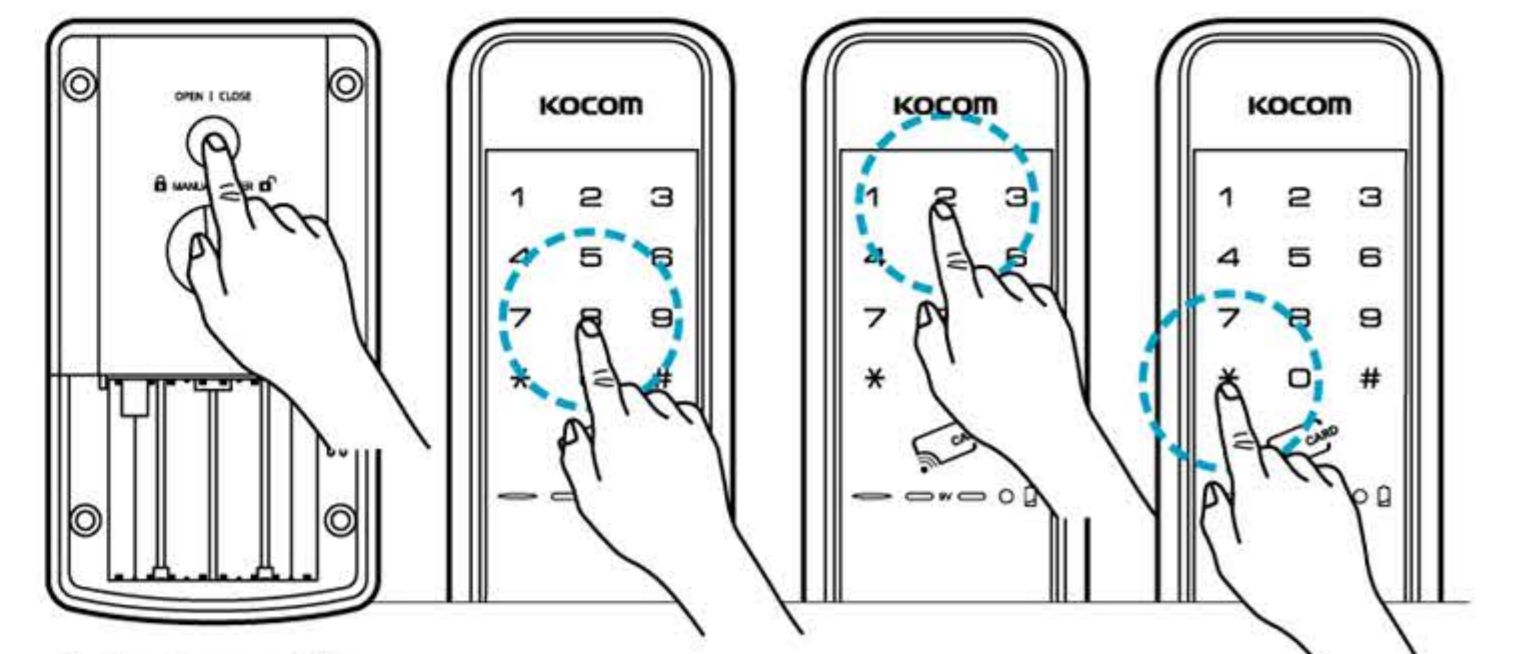
5. Auto-Close / Manual-Close setting



Auto-Close setting
Press "OPEN / CLOSE" button for 5sec and press number 1. You will hear long beep sound as confirmation

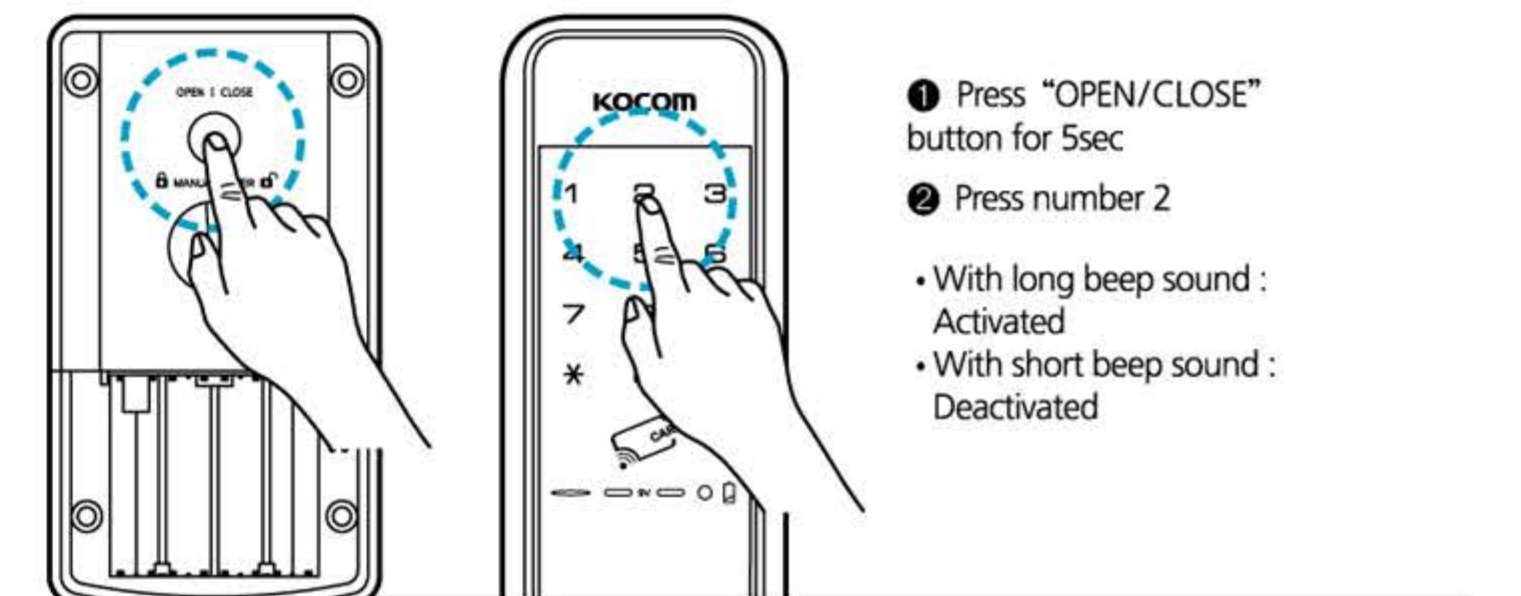
Manual-Close setting
Press "OPEN / CLOSE" button for 5sec and press number 1. You will hear short beep sound as confirmation

6. Auto-Close / Time setting



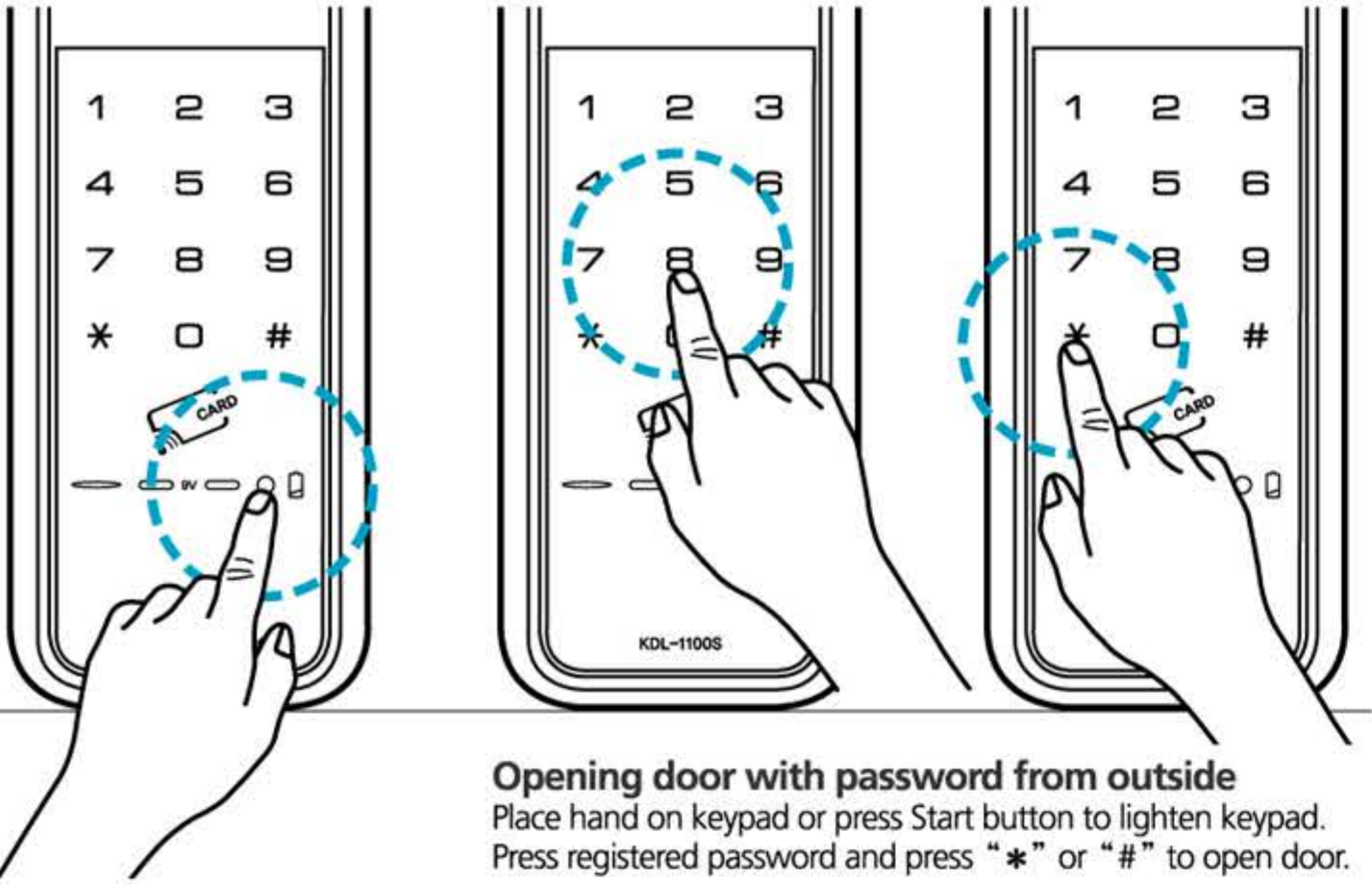
Auto-close setting
Press "OPEN / CLOSE" button for 5sec and then you will hear beep sound. Press number 8 and press number (1~8) for time set and press "*" to complete. Factory default is 2sec.

7. Imaginary number function (Optional)

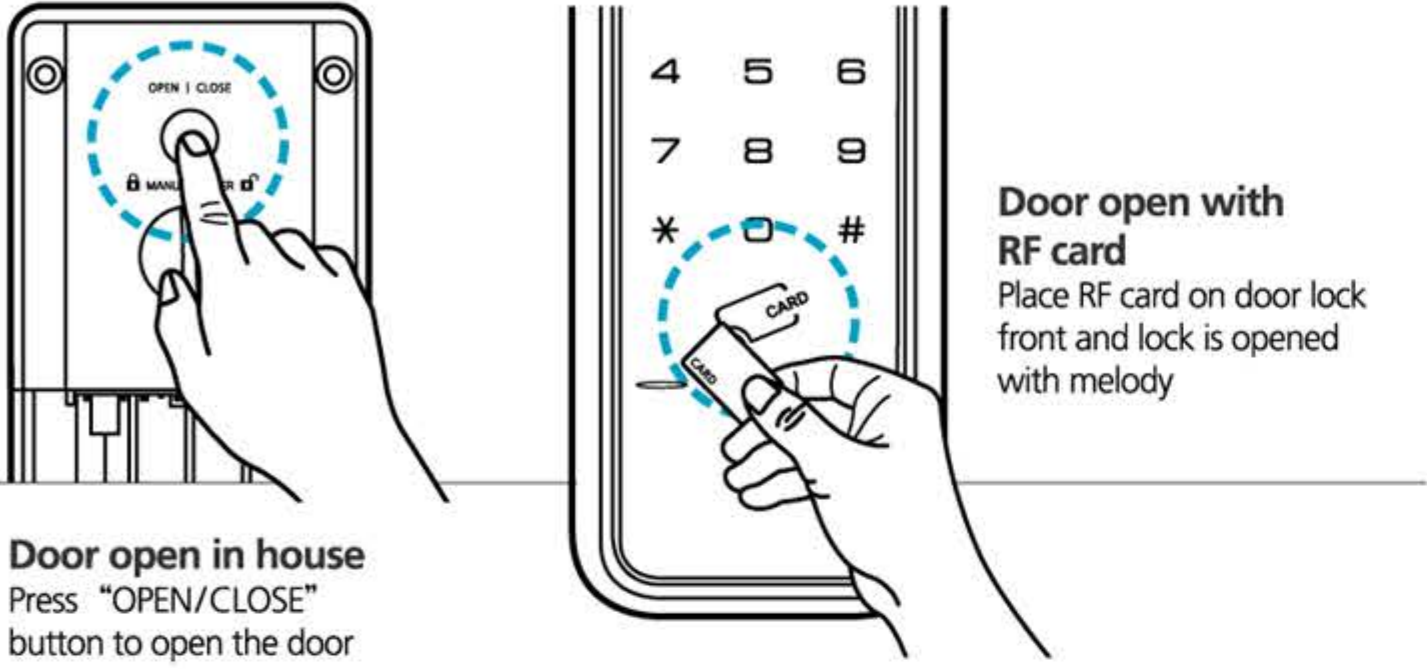


- 1 Press "OPEN/CLOSE" button for 5sec
- 2 Press number 2
- With long beep sound : Activated
- With short beep sound : Deactivated

8. How to open the door



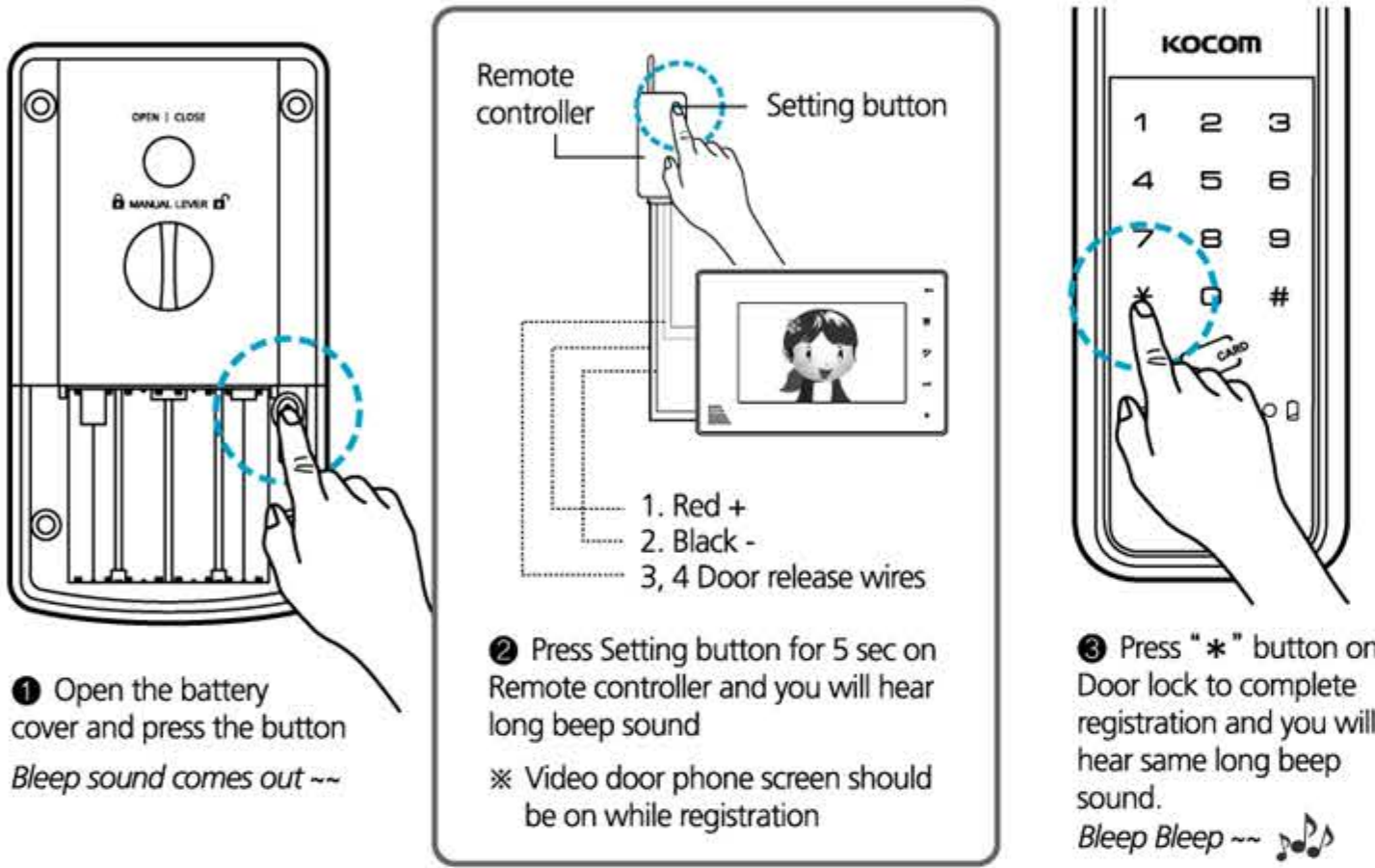
Opening door with password from outside
Place hand on keypad or press Start button to lighten keypad. Press registered password and press "*" or "#" to open door.



Door open with RF card
Place RF card on door lock front and lock is opened with melody

Door open in house
Press "OPEN/CLOSE" button to open the door

9. Way to register wireless transmission/reception communication device module for door lock (optional)

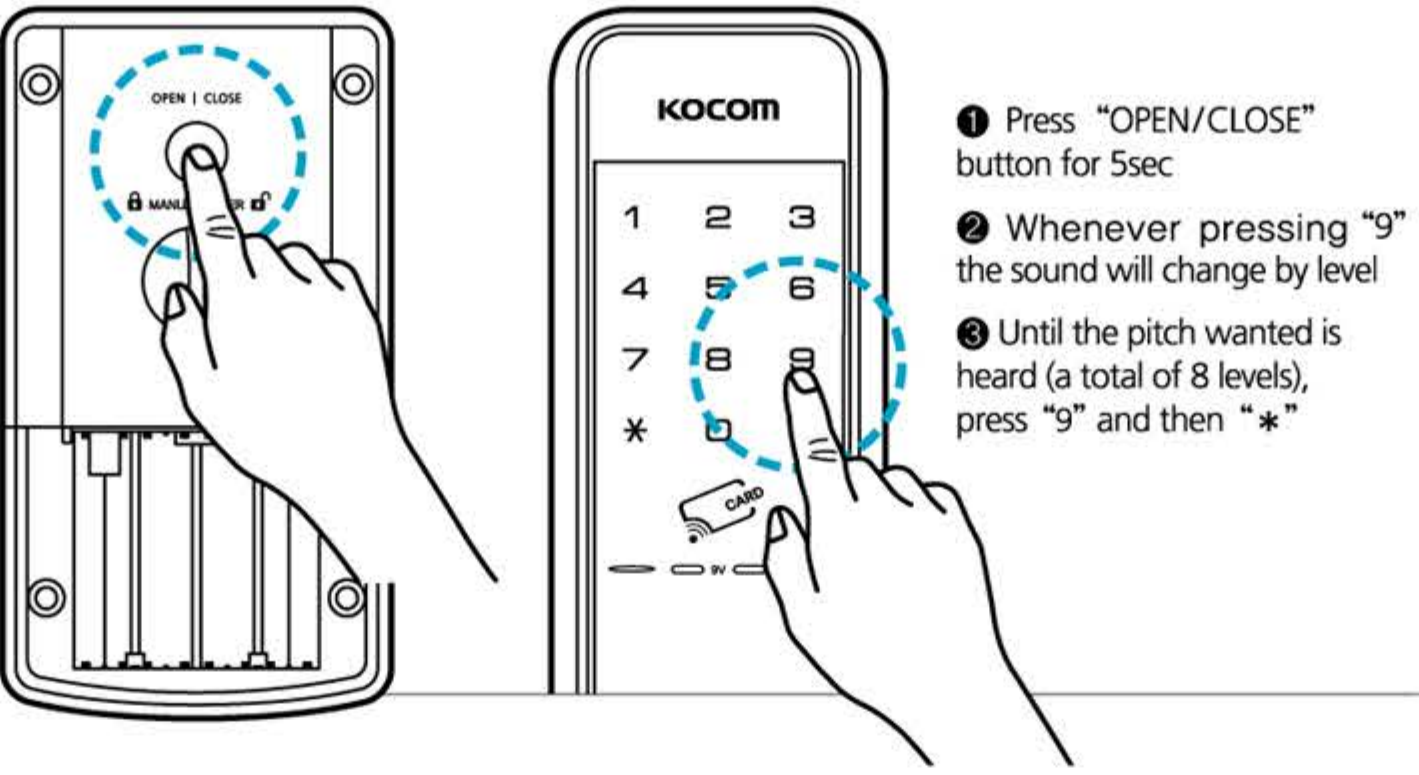


1. Open the battery cover and press the button
Bleep sound comes out ~~~

2. Press Setting button for 5 sec on Remote controller and you will hear long beep sound
※ Video door phone screen should be on while registration

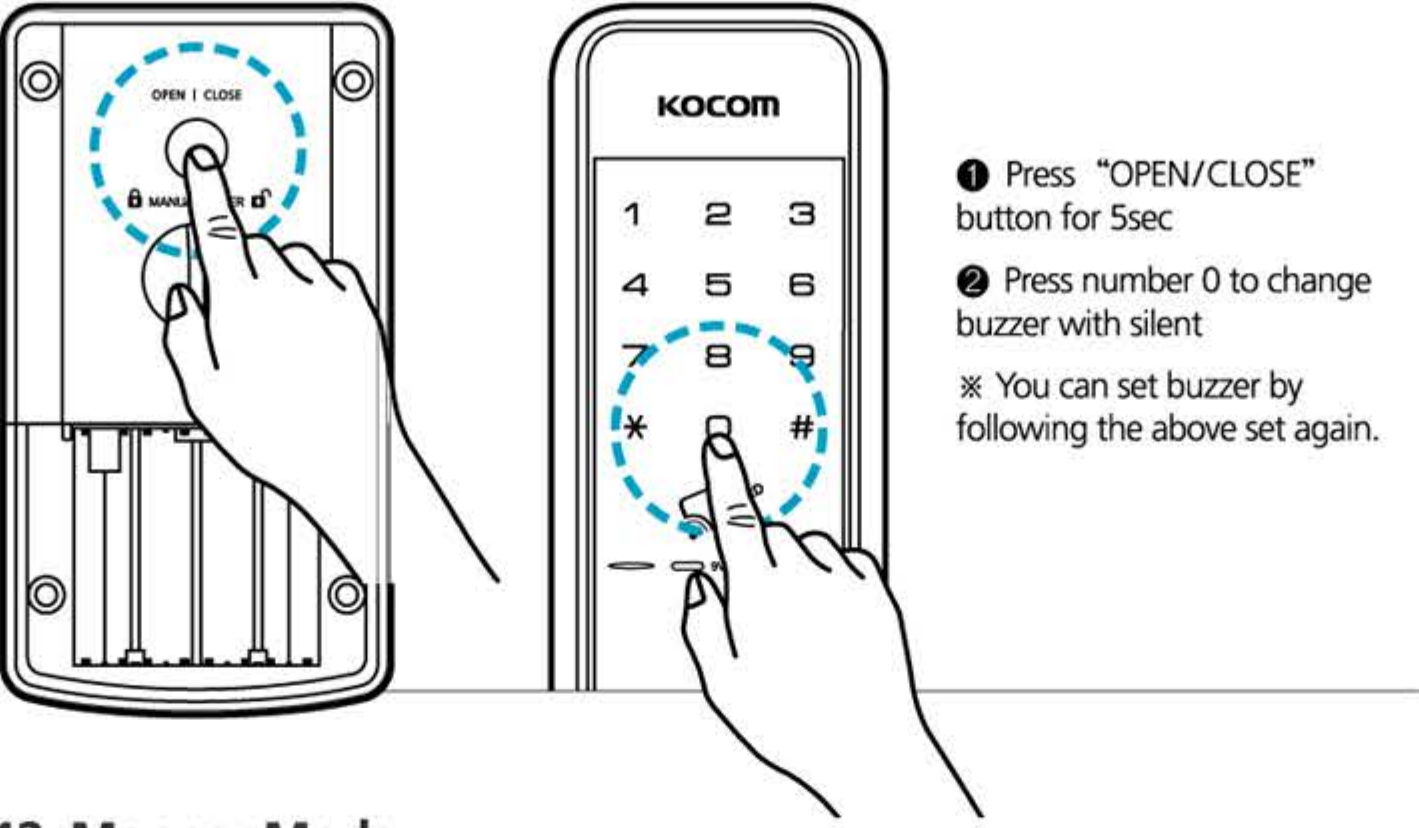
3. Press "*" button on Door lock to complete registration and you will hear same long beep sound.
Bleep Bleep ~~~

10. High / Low tone setting



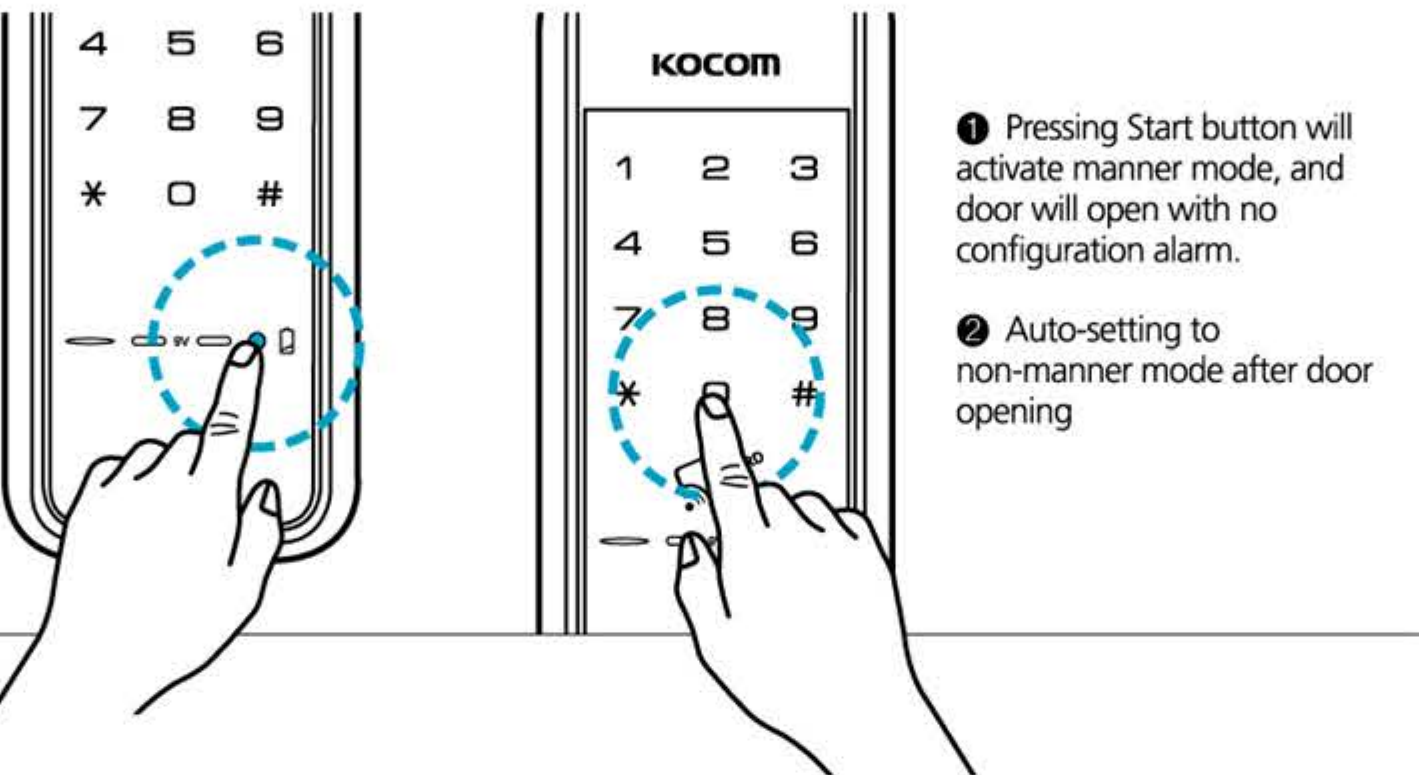
1. Press "OPEN/CLOSE" button for 5sec
2. Whenever pressing "9" the sound will change by level
3. Until the pitch wanted is heard (a total of 8 levels), press "9" and then "*"

11. Buzzer / silent setting



1. Press "OPEN/CLOSE" button for 5sec
2. Press number 0 to change buzzer with silent
※ You can set buzzer by following the above set again.

12. Manner Mode

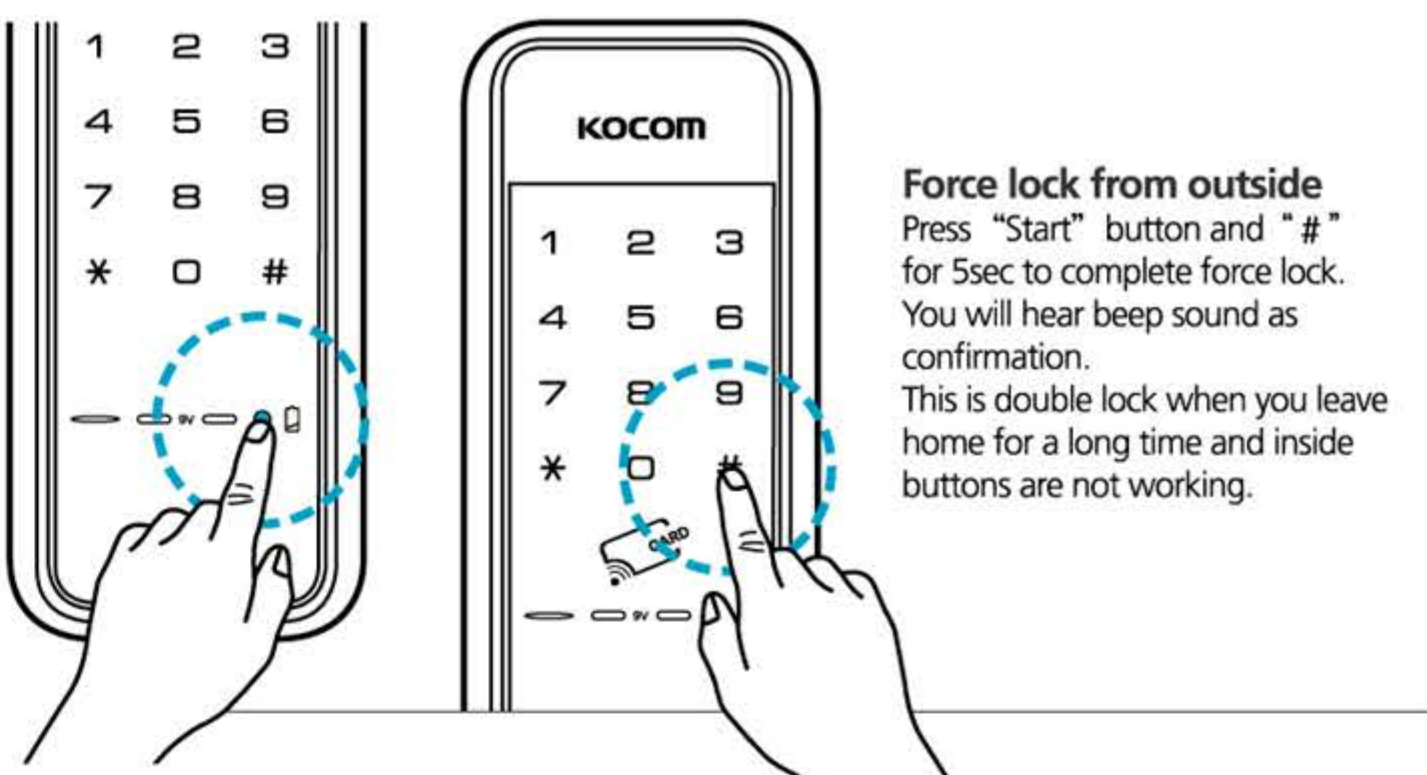


1. Pressing Start button will activate manner mode, and door will open with no configuration alarm.
2. Auto-setting to non-manner mode after door opening

13. Disarm alarm

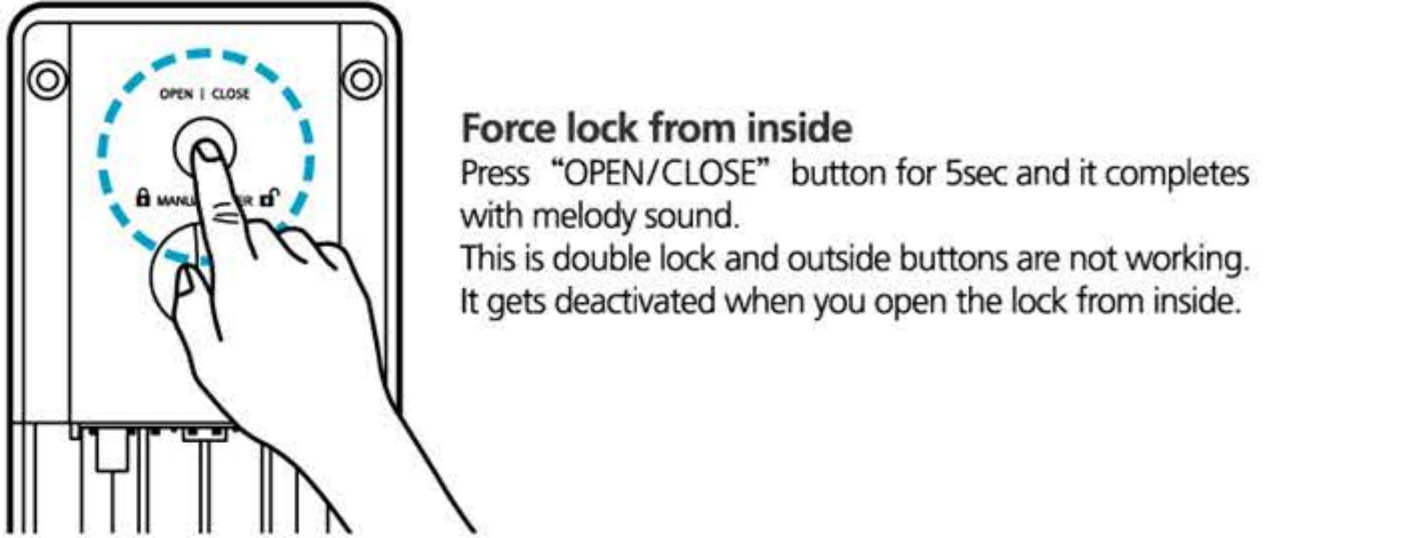
When the warning happens
If an alarm sounds, press the password or touch the card key to clear the alarm. However, when a malfunction alarm sounds (password error), operation stops for 30 seconds.

14. How to close in force



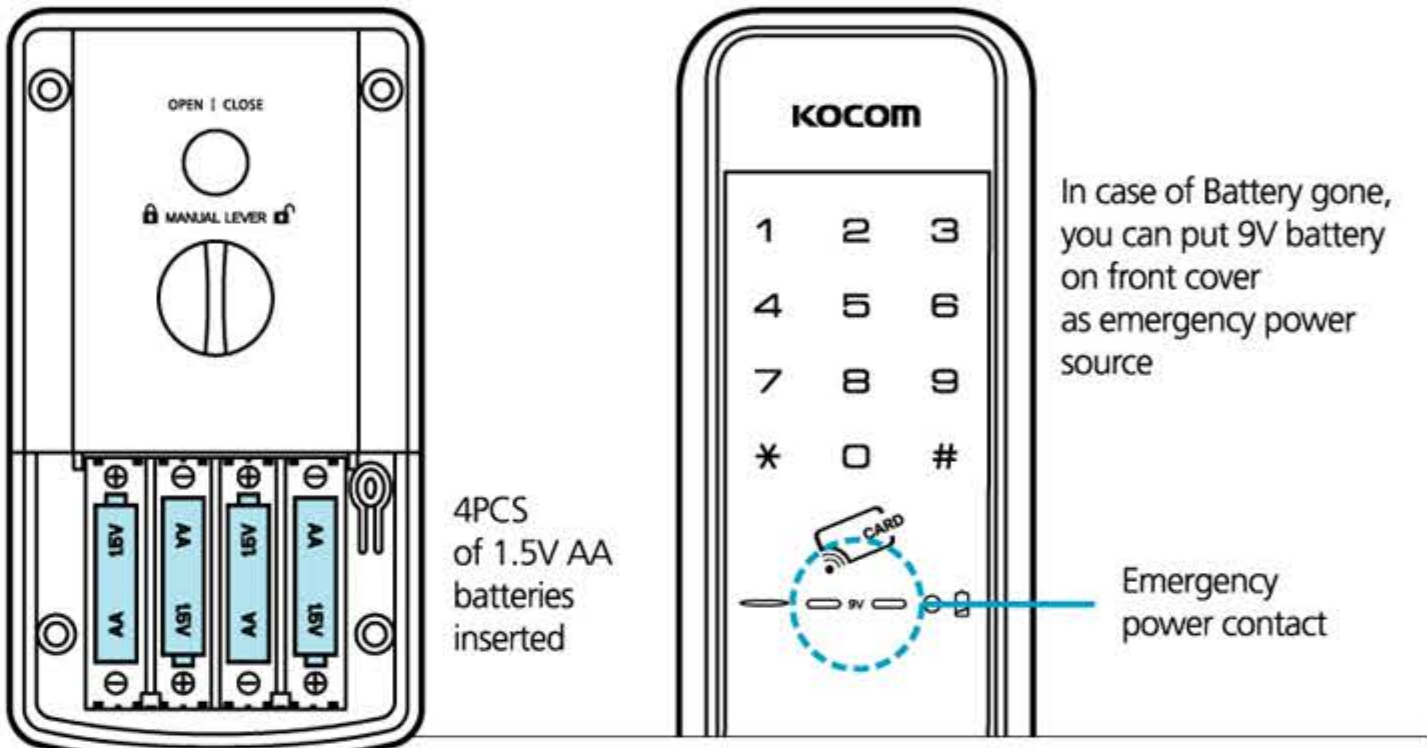
Force lock from outside
Press "Start" button and "#" for 5sec to complete force lock. You will hear beep sound as confirmation. This is double lock when you leave home for a long time and inside buttons are not working.

▶ When "Force lock from outside" activated, "OPEN/CLOSE" button is not working.
▶ When "Force lock from outside" activated, it gets deactivated if you turn the manual lever from inside.
▶ When "Force lock from outside" activated, you can open the lock with password or Card.



Force lock from inside
Press "OPEN/CLOSE" button for 5sec and it completes with melody sound. This is double lock and outside buttons are not working. It gets deactivated when you open the lock from inside.

15. Battery replacement method



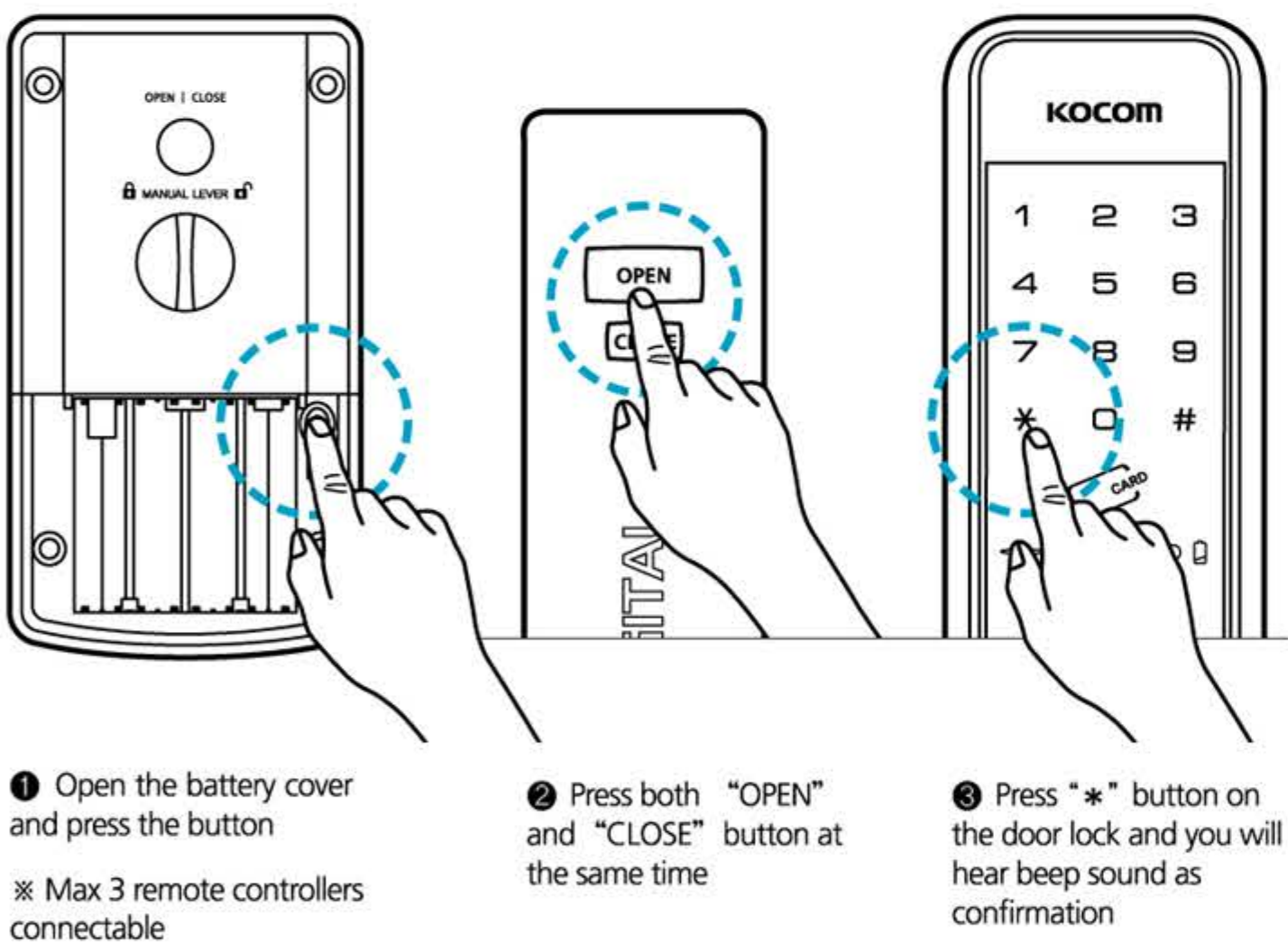
1. Battery life time : 4M to 8M upon 10times using a day
2. Battery change alarm : Blinking red lights with melody.
Open battery cover and replace all 4PCS of 1.5V AA at once. Make sure its polarity
3. Emergency power supply : After battery is fully discharged, place 9V battery on emergency power contact and open the door with password or RF card

3. How to use

5. Quick Manual

7. Warranty Service for Product Defects

16. Remote control registration (Option)

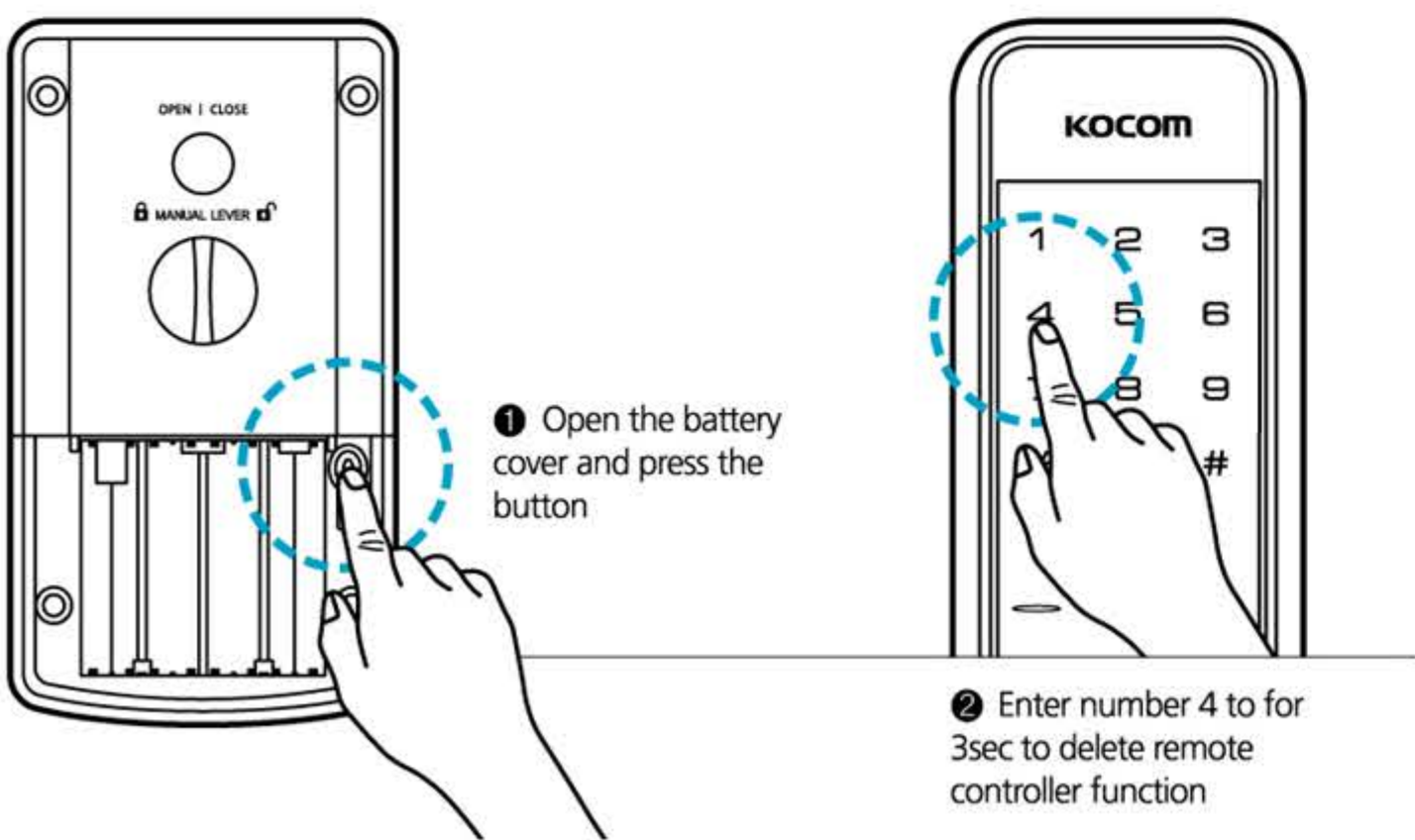


1. Open the battery cover and press the button
※ Max 3 remote controllers connectable

2. Press both "OPEN" and "CLOSE" button at the same time

3. Press "*" button on the door lock and you will hear beep sound as confirmation

17. Remote control deletion



1. Open the battery cover and press the button

2. Enter number 4 for 3sec to delete remote controller function

4. Consumer support

- Receive A/S from the installation agency or the main office in case of any troubles in the product
- Then, in case of the carelessness of consumers and after the warranty period (one year), you need to pay for the repair.
- In case you have no the warranty card, you need to pay for A/S, so you are required to keep it.
- The cost for repair includes the cost of parts and the business trip expenses.
- This compensation standard for damage follows the compensation regulation for consumer damage noticed by the Ministry of Finance and Economy.

6. Product specification

KDL-1100 ☐ KDL-1100S ☐

Item	Specification of KDL-1100 / KDL-1100S				
Rated Voltage	4ea 1.5 V (LR6) AA alkaline batteries (6 V)				
Emergency Power Source	1ea 9 V battery (6LF22) (sold separately)				
Operation Method	Electronic control (entering password or reading card key)				
Weight	700 g (including the outdoor and indoor units)				
Dimensions	Indoor unit		160 mm (W) × 90 mm (H) × 50 mm (D)		
	Outdoor unit		71 mm (W) × 162 mm (H) × 17 mm (D)		
Item	Usable Frequency	Type of Radio Wave	Type of Radio Wave	Type of Radio Wave	Power Supply
RFID	13.56 MHz	A1D	ASK	Single	DC 6V (1.5V AA × 4EA)
For Safety System	447.275 MHz	F1D	FSK	Single	
Self-Regulatory Safety Confirmation Certificate No.	B223H006-7002B				
Type and Symbol	NF-TNK-S				
Certification No.	MSIP-REM-H1P-1100 / MSIP-CMM-H1P-M-1100				
Model	KDL-1100, KDL-1100S		Country of Manufacture	Made in KOREA	
Vendor	KOCOM Co., Ltd.				
Date of Production Year	Year :		Month :		

※ You are recommended to use this device (a Class B device registered for EMC (Electromagnetic Compatibility)) chiefly at home.

※ Any of the details of the manual can be changed without notifying you in advance for improvement of the product functions. (a sticker will be used on the follow-up model for any change)

Damage types		Compensation items	
		Within warranty period	After warranty period
State of Normal Use	In case the troubles occur within 12 months after installation	Repair for free	Repair for Cost
	In case the same troubles occur two times	Repair for free	Repair for Cost
	In case the same troubles occur three times	Product replacement	Repair for Cost
	In case there is no any parts for repair	Product replacement	Product replacement (Limited to flat-rate depreciation)
Intention or Fault of Consumer	In case of an official trip because of consumer's mistake including the fault of exchanging batteries and the immaturity of inputting	Repair for Cost	Repair for Cost
	To exchange consumption goods including batteries	Repair for Cost	Repair for Cost
	Failures or damages due to other purposes than the original purpose of the product	Repair for Cost	Repair for Cost
	Failures or damages of purpose	Repair for Cost	Repair for Cost
	Failures or damages because entering passwords has been omitted or passwords have been forgotten	Repair for Cost	Repair for Cost
	Product damaged because of not carrying an emergency manual key	Repair for Cost	Repair for Cost
Failures or damages due to a fire or natural disasters		Repair for Cost	Repair for Cost
Malfunctions due to condensation and moisture and improper operations due to poor installation		Repair for Cost	Repair for Cost

Warranty Card (for Company)

Thank you very much for purchasing KOCOM Co., Ltd.'s digital door lock. The quality assurance period is counted from the date of purchase. Therefore be sure to have the date specified for sufficient service.

Customer name	
Telephone	
Model Name	
Serial Number	
Term of Guarantee	
Address	
Installation Agency	
Telephone	
Address	

- This product is produced by the thorough quality management.
- In case any troubles occur in the state of normal use within the warranty period, you can receive A/S for free.
- You are required to fill up the address, name and telephone number on the warranty card in time of buying the product and to keep the card well, and if otherwise, you need to pay for repair.